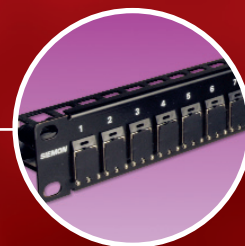
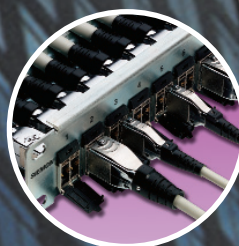


SIEMON

NETWORK CABLING SOLUTIONS

TERA® S/FTP SYSTEM



Exceeding ISO/IEC category 7/class F_A specifications, Siemon's fullyshielded TERA end-to-end cabling solution is the highest-performing twisted-pair copper cabling system available. TERA supports performance to 10 Gb/s and beyond, far exceeding all performance requirements for 10GBASE-T.

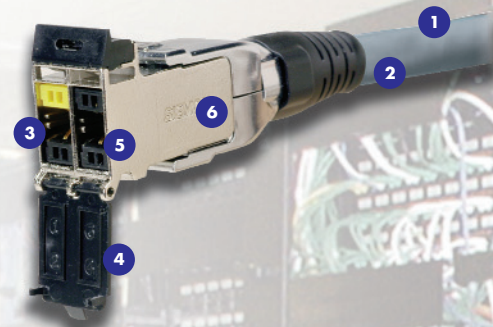


SIEMON™

TERA OUTLET:

TERA outlets are the industry's highest performing network cabling connectors. Outlets accept 1-, 2- and 4-pair plugs and terminate fully shielded category 7_A cables. TERA outlets can be used in both the work area and in the telecommunications room.

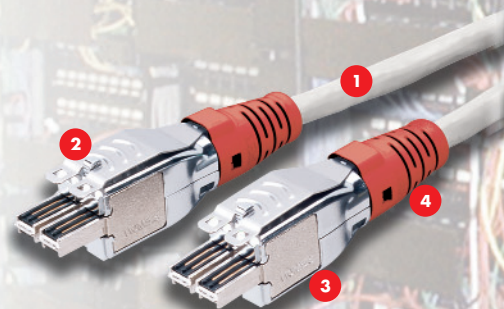
- 1 Fully Shielded** — Virtually eliminates alien crosstalk
- 2 Shielded Termination** — Connector assures proper termination of cable shield, no additional crimping or processes are required for grounding cable
- 3 Compact Design** — Slim, compact design allows outlets to be side-stacked and inserted from either the front or rear of faceplate or patch panel
- 4 Hinged Door** — Outlets include a hinged door to prevent exposure to dust and other contaminants
- 5 Quadrant Isolation** — Shielded quadrant design fully isolates pairs for optimum NEXT performance
- 6 Cable Sharing** — TERA's ability to share one 4-pair cable and outlet to support multiple applications can save significant material and installation costs



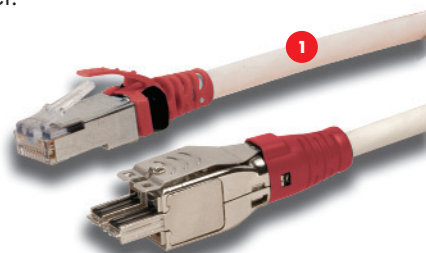
TERA PATCH CORDS:

TERA-to-TERA 4-pair patch cords deliver twice the bandwidth of class F specifications when combined with the TERA outlet.

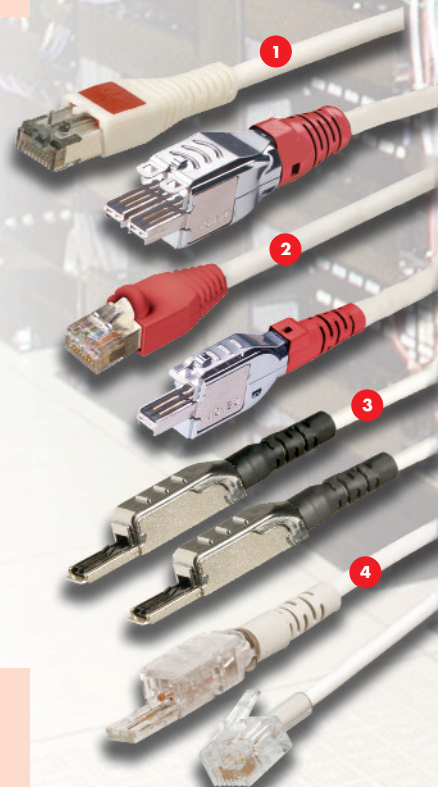
- 1 Fully Shielded** — S/FTP cable construction provides 1000 MHz bandwidth per pair
- 2 Patented Shield Design** — Quadrant plug design isolates pairs, virtually eliminating crosstalk
- 3 Standards Compliant Interface** — Recognised within ISO/IEC 11801 Ed. 2.0
- 4 Plug Identification** — Plug-port identification available via coloured boots



Unleash the power and flexibility of your TERA cabling with a variety of TERA patch cords designed to meet your application requirements today and tomorrow. Both TERA-to-TERA and TERA-to-modular plug cord options are available. 1- and 2-pair plug modularity allows multiple applications to be served from a single 4-pair outlet.

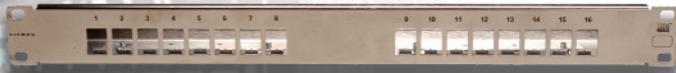
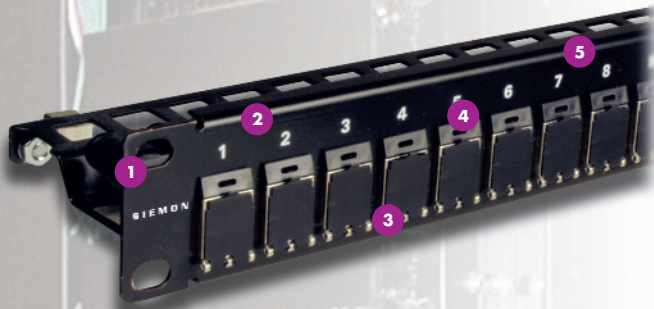


- 1 4-Pair TERA** - to - screened augmented category 6 MC® and BladePatch® modular plug for 1G/10G Ethernet performance
- 2 2-Pair TERA** - to - screened category 5e compatible MC modular plug for 10/100 Ethernet support
- 3 1-Pair TERA** - to - TERA for analog voice and video patching. Video balun cord also available.
- 4 1-Pair UTP TERA** - to - RJ11 for analog voice



TERA-MAX® PATCH PANELS:

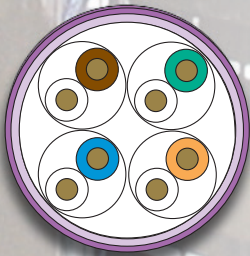
TERA-MAX 19 inch screened patch panels provide unprecedented performance and reliability in a shielded, high-density modular solution. As outlets are snapped into place, resilient ground tabs and ground lugs assure that each outlet and cable is properly grounded for maximum protection against outside interference. Built-in cable management and strain relief features are integrated onto the rear of the panel.



- 1 Standard Fit** — Panels can be mounted directly on standard 19 inch relay rack or cabinet
- 2 Durable** — Lightweight, high strength steel with black or metallic finish
- 3 High Density** — 24 10Gb/s ports in just 1 U
- 4 Installation Friendly** — Individual modules snap into place from front or rear of panel, providing integrated grounding without additional steps
- 5 Port Identification** — Bold port numbering enables quick identification of outlets

TERA S/FTP CABLE:

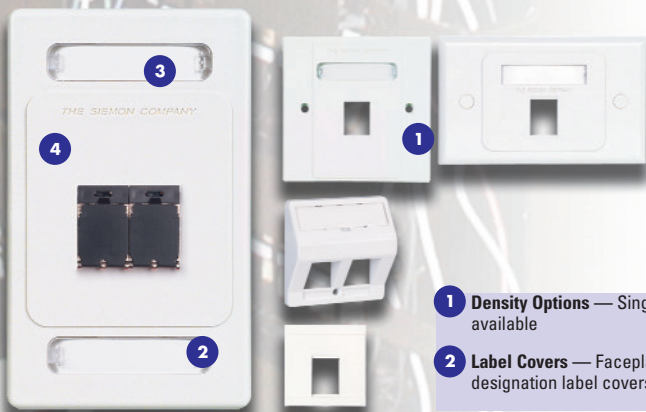
Siemon's TERA cable perfectly complements the performance of our TERA outlets. TERA cable varieties exceed all ISO/IEC requirements for category 7_A/class F_A transmission performance. The use of Siemon cable is required for a complete end-to-end warranted TERA system.



- 1 Aluminum-Polyester Foil** — Individually shielded pairs ensure virtually zero alien crosstalk
- 2 Braid Screen** — Overall tinned-copper braid further protects against alien crosstalk
- 3 Cable Diameter** — 8.4mm cable diameter provides 10Gb/s performance and beyond in a manageable cable size
- 4 Standards Compliant** — ISO/IEC 11801:2002 category 7/class F, LS0H: IEC 60332-1, IEC 60754 and IEC 61034, IEC 61156-5:2002, ISO/IEC 15018 BCT Channel Application (1200 MHz only), IEC 61156-7:2003 (1200 MHz only)

MAX FACEPLATES:

Siemon's popular MAX faceplates are designed to provide support to any combination of TERA outlets.



- 1 Density Options** — Single and double gang faceplates available
- 2 Label Covers** — Faceplates include pressure-release designation label covers for quick, tool-less removal
- 3 Labels** — Sheets of designation labels can be ordered to use with printers
- 4 Durability** — UV resistant, high impact plastic prevents colour fading and provides added durability

ORDERING INFORMATION

TERA ® S/FTP System Products

TERA 4-PAIR OUTLET

T7F-01-1* TERA 4-pair outlet with black door, icon and boot

TERA CATEGORY 7 PATCH CORDS

Category 7 compatible, TERA-to-TERA, LSOH cable assembly, ivory jacket, coloured boot.

T (X) - (X X) M - B (X X) L			
Plug Type:		Boot Colour:	
1 = 1-Pair		01 = Black	05 = Yellow
4 = 4-Pair		02 = White	06 = Blue
		03 = Red	07 = Green
Cord Length:			
01 = 1m		03 = 3m	
02 = 2m		05 = 5m	

TERA AUGMENTED CATEGORY 6 PATCH CORDS

Augmented category 6, TERA-to-Screened RJ-45 modular plug, LSOH cable assembly, ivory jacket, coloured boot.

T 4 (X) - S (X X) M - B (X X) L			
Plug Type:		Boot Colour:	
A = T568B*		01 = Black*	05 = Yellow
T = T568A		02 = White*	06 = Blue*
		03 = Red	07 = Green
Cord Length:			
01 = 1m*		03 = 3m*	
02 = 2m*		05 = 5m*	

COLOURED CLIPS

CLIP-(XX) Colour coding clip, bag of 25

Use (XX) to specify colour: 01 = black, 02 = white, 03 = red, 04 = grey, 05 = yellow, 06 = blue, 07 = green

TERA CATEGORY 5e COMPATIBLE PATCH CORDS

TERA-to-Screened RJ-45, or TERA-to- 6 position (Voice) modular plug, LSOH cable assembly, ivory jacket, coloured boot.

T (X X X) - (X X) M - B (X X) L			
Plug Type:		Boot Colour:	
2E2 = 2-Pair, RJ-45*, 10/100BASE-T		01 = Black*	05 = Yellow
2UT = 2-Pair, RJ-45, Token Ring		02 = White*	06 = Blue*
1U1 = 1-Pair*, UTP*, 6-position, Voice		03 = Red	07 = Green
Cord Length:			
01 = 1m*		03 = 3m*	
02 = 2m*		05 = 5m*	

TERA-TO-SCREENED BLADEPATCH® CORDS

Also available, contact our Customer Service Department for details

* FOCUS products are highlighted in red. They are the most popular Siemon products and have the shortest lead times.

TERA-MAX® PATCH PANELS

TERA-MAX 19 inch patch panels provide performance and reliability in a shielded, high-density modular solution. Panels include mounting hardware.

TM-PNL-16 16-port panel, metallic, 1 U

TM-PNL-16-01 16-port panel, black, 1 U

TM-PNL-24 24-port panel, metallic, 1 U

TM-PNL-24-01* 24-port panel, black, 1 U

TM-PNLA-24 24-port angled panel, metallic, 1 U

TM-PNLA-24-01 24-port angled panel, black, 1 U*

TERA LSOH 4-PAIR SOLID CABLE

Utilising Siemon cable is the ideal way to ensure optimum channel performance and is required for a complete end-to-end warranted system.

9T7L4-E12 S/FTP, violet jacket, 1200 MHz, 305m

9T7L4-E10* S/FTP, violet jacket, 1000 MHz, 305m*

9N7L4-E6 F/FTP, violet jacket, 600 MHz, 305m

Other cable lengths also available: Add "-5CR" for 500m reel, "-1KR" for 1000m reel

MAX FACEPLATES

Faceplates include designation labels, clear label covers, and mounting screws.

British Style:

MX-BFP-S-01-(XX) Single gang for one TERA outlet

MX-BFP-S-02-(XX) Single gang for two TERA outlets

MX-BFP-S-03-(XX) Single gang for three TERA outlets

MX-BFP-S-04-(XX) Single gang for four TERA outlets

MX-BFP-S-06-(XX) Double gang for six TERA outlets

Use (XX) to specify colour: 02 = white, 25 = bright white

Australian/Italian Style:

MX-HFP-01-(XX) Single gang horizontal for one outlet

MX-HFP-02-(XX) Single gang horizontal for two outlets

MX-HFP-03-(XX) Single gang horizontal for three outlets

MX-HFP-04-(XX) Single gang horizontal for four outlets

Use (XX) to specify colour: 02 = white, 80 = light ivory

Adapters/Faceplates:

MX-45-01-(XX) 45mm x 45mm 1-port adapter

Use (XX) to specify colour: 02=white, 25 = bright white, 82=alpine white

T45-82 45mm x 45mm 1-port angled faceplate adapter, alpine white

T50-(XX) TERA-MAX 50mm x 50mm 2-port faceplate

Use (XX) to specify colour: 02=white, 80=light ivory, 82=alpine white

For additional resource information:

Visit our web site at www.siemon.com

Because we continuously improve our products, Siemon reserves the right to change specifications and availability without prior notice.

10G ip™, TERA®, MAX®, BladePatch® and MC® are trademarks of Siemon