



NEW

## PULTI® I.P MONITORING + Remote power monitoring [kWh, Watts, Volts, Amps ...]



The Netherlands  
Tel.: +31 (0)23 - 531 91 84  
info.nl@m-h.biz

Belgium  
Tel.: +32 (0)3 - 660 13 20  
info.be@m-h.biz

Germany  
Tel.: +49 (0)6192 - 97 91 85  
info.de@m-h.biz

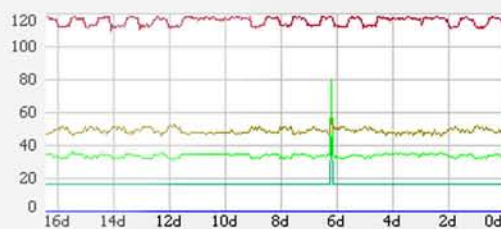
[www.mulder-hardenberg.com](http://www.mulder-hardenberg.com)



### Sensors

#### RCX

kWatt-hours	98.56 kWh
Volts	113.30 V
Volts (Peak)	113.40 V
Amps	0.29 A
Amps (Peak)	0.30 A
Real Power	17.00 Watts
Apparent Power	32.9 Watts
Power Factor	51.7 %



#### AF/HTD Sensor

Temperature (C)	21.24 °C
Air Flow	13
Relative Humidity	25 %
Dew Point (C)	0.41 °C

20: Still - 100: Rushing



## PDU PULTI® I.P Monitoring +

*Remote monitoring (kWh, Watts, Volts, Amps ...)*

### CONCEPT

- Remote power monitoring (kWh, Watts, Volts, Amps ...) + 2 sensor ports
- Remote LCD display (easy viewable power and environmental datas)
- Integration into **SNMP** system for remote notification
- Threshold alarms allows convenient notification and increase safety

### APPLICATION

- Power measurement of the PDU, by group of sockets and by phase
- Secure data transmission with different user-level and passwords, user-friendly interface
- Real-time monitoring and alarming (**SNMP** traps, e-mails, audible alarm ...) of power variable and optional environmental condition

### Power and environmental monitoring



### Product information

#### Description

The PDU PULTI® I.P Monitoring + are rack level PDUs with Circuit Monitoring via built-in web server in a self-contained unit. Web pages, including graphs, are generated by the unit to monitor power and environmental conditions within the cabinet.

#### Networking

- Protocols : HTTP, HTTPS (SSL/TLS), SMTP, POP3, ICMP, DHCP, TCP/IP, NTP, Telnet, Syslog
- Data formats : HTML, SNMP, CSV/Plain Text, XML

#### Setting Alarms

For all data collected by the unit, the user can set high and low limits. When these limits are exceeded the user has the option of sending an e-mail, **SNMP** trap, activate the audible alarm (on units where it is present), or any combination of the three. The **SNMP** traps can be sent to 4 IP addresses.

#### Accounts, Passwords and Security

The unit is accessible via a standard unencrypted HTTP connection as well as an encrypted HTTPS (SSL) connection. The user may opt to enable access via HTTP, HTTPS or both HTTP and HTTPS. It is not possible to disable the web interface completely.

The unit has a View-Only account, a Control Access account, and an Administrator account.

#### Environmental sensors :

A wide range of sensors (temperature, humidity ...) is available. Please check pages 26 to 28 in our catalogue "PDU Data Center".

Plans, diagrams, drawings and photographs are for illustration only and may be subject to technical alterations. They are the exclusive property of P.G.E.P.® and it is strictly prohibited to copy, reproduce or implement them.



## PDU Extension

### CONCEPT :

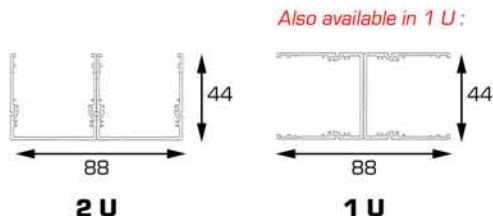
Extension module for measurement of kWh, Watts, Volts, Amps ..., from a "slave" unit

### APPLICATION :

Customization with an intelligent solution of existing installations



- Body of the PDU made of black anodized aluminium - 2 U (= 88 mm)



Reference	Description	Dimensions (mm)
850500	PDU Extension 16 A with : <b>2 x 3 G 1,5 mm<sup>2</sup> cable with 16 A plug M/F</b>	440 x w 88 x h 44
850501	PDU Extension 32 A with : <b>2 x 3 G 4 mm<sup>2</sup> cable with 32 A plug M/F</b>	440 x w 88 x h 44
850502	PDU Extension 16 A with : <b>2 x 16 A neutrik (input) + 16 A neutrik (output)</b>	440 x w 88 x h 44
850503	PDU Extension 32 A with : <b>2 x 32 A neutrik (input) + 32 A neutrik (output)</b>	440 x w 88 x h 44

## PDU Single phase

### CONCEPT :

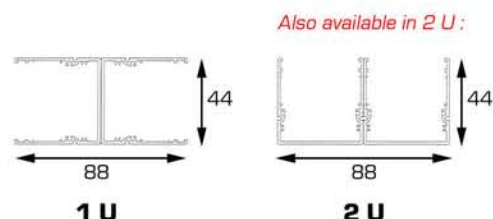
PDU ready for feeding and monitoring of the connected equipments

### APPLICATION :

PDU suitable for various configuration of single phase installation



- Body of the PDU made of black anodized aluminium - 1 U (= 44 mm)



Reference	Description	Dimensions (mm)
850504	PDU Single phase 16 A with : <b>9 IEC 320-C13 connectors</b>	440 x w 44 x h 88
850505	PDU Single phase 16 A with : <b>9 IEC 320-C19 connectors</b>	440 x w 44 x h 88
850506	PDU Single phase 16 A with : <b>9 french socket-outlets 2 P+E</b>	440 x w 44 x h 88
850507	PDU Single phase 16 A with : <b>9 german socket-outlets 2 P+E</b>	440 x w 44 x h 88

Plans, diagrams, drawings and photographs are for illustration only and may be subject to technical alterations. They are the exclusive property of P.G.E.P.® and it is strictly prohibited to copy, reproduce or implement them.

## PDU Single phase

### CONCEPT :

PDU ready for feeding and monitoring of the connected equipments

### APPLICATION :

PDU suitable for various configuration of single phase installation



- Body of the PDU made of black anodized aluminium - 1 U (= 44 mm)

Reference	Description	Dimensions (mm)
850508	PDU Single phase 16 A with 2 groups each one made up of : 2 IEC 320- <b>C19</b> + 10 IEC 320- <b>C13</b>	1493 x w 44 x h 44
850509	PDU Single phase 32 A with 2 groups each one made up of : 2 thermal and magnetic circuit-breakers + 2 IEC 320- <b>C19</b> + 10 IEC 320- <b>C13</b>	1628 x w 44 x h 44

## PDU Three phases

### CONCEPT :

PDU ready for feeding and monitoring of the connected equipments

### APPLICATION :

PDU suitable for various configuration of three phases installation

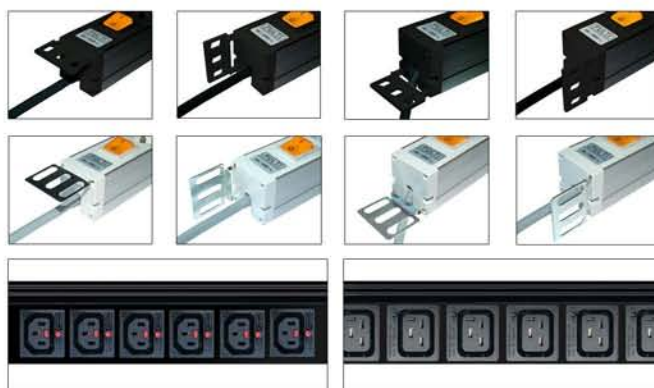


- Body of the PDU made of black anodized aluminium - 1 U (= 44 mm)

Reference	Description	Dimensions (mm)
850510	PDU Three phases 16 A each one made up of : 6 IEC 320- <b>C13</b> connectors	1364 x w 44 x h 44
850511	PDU Three phases 32 A each one made up of : 2 thermal and magnetic circuit-breakers + 6 IEC 320- <b>C13</b> connectors	1760 x w 44 x h 44

## Options and configurations available

The products on this document are only examples of the numerous configuration we are able to offer. Do not hesitate to contact us, we will manufacture PDUs to your standard.



IEC 320-C13 locking system

IEC 320-C19 locking system



Plans, diagrams, drawings and photographs are for illustration only and may be subject to technical alterations. They are the exclusive property of P.G.E.P.® and it is strictly prohibited to copy, reproduce or implement them.